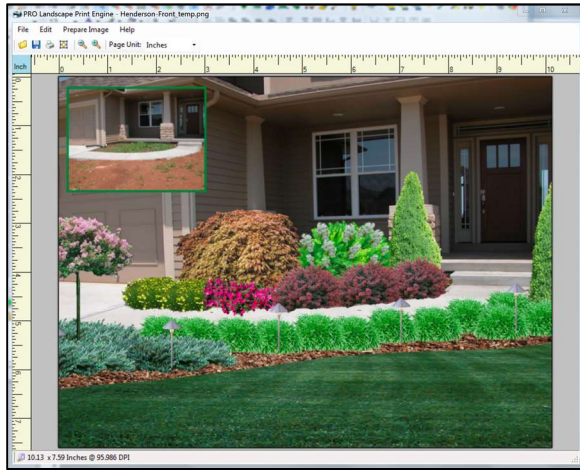


# What's New in PRO Landscape Version 24

**Over 1000 New Images** – The industry’s largest library just got even larger! PRO Landscape now includes over 18,000 of the industry’s highest quality images. The additional images include plants for all climate zones as well as new images for most non-plant categories (also includes images from our acquisition of EARTHSCAPES). These new plant images also include a corresponding, scaled CAD symbol that accurately represents each plant.

**Image Editor Dimension Tool** – The designer can use this new tool to measure approximate distances on Image Editor projects based off of a single known measurement.



**New Print Engine** – Now print or export your projects at high-resolution levels directly from Image Editor.

**Enhanced Search** – We’ve enhanced the search for more accuracy when you search for multiple search terms. For example, searching for “Boxwood, Common” or “Common Boxwood” will find objects that have both terms in the name.

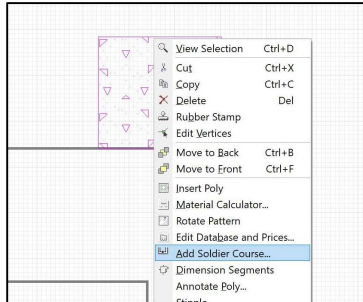
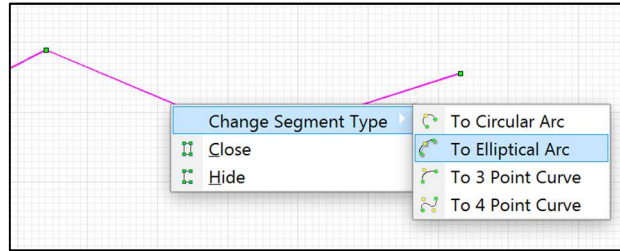
**Quick Quote** – Have you ever wondered if your design is still within the customers’ budget? You can now get an instant price quote from your Image Editor or Planner projects without going to Proposal. Add some plants and other materials and use the Quick Quote menu to get a current estimate for your design.

SKU	Size Or Unit	Description	Quantity	Net Price	Total
Total before taxes			\$15,696.40		
SHR161-G	5 Gal.	Copper Leaf Plant	1.00	\$55.00	\$55.00
FLO163	Each	Cherry Pie	16.00	\$18.00	\$288.00
FLO139	Each	Coleus or Painted Nettle	19.00	\$18.00	\$342.00
FLO156	Each	Elephant Ears	18.00	\$18.00	\$324.00
FLO176	Each	Marigold, Orange	10.00	\$18.00	\$180.00
FLO377	Each	Astilbe, Mixed	49.00	\$18.00	\$882.00
FLO375	Each	Astilbe, Red	22.00	\$18.00	\$396.00
FLO345	Each	Bear's Breeches	4.00	\$18.00	\$72.00
FLO446	Each	Bleeding Heart	21.00	\$18.00	\$378.00
FLO349	Each	Bugleweed, Geneva	27.00	\$18.00	\$486.00
FLO408	Each	Chrysanthemum, Garden Mum, Rust	6.00	\$18.00	\$108.00
BOU2002	Sq. Ft.	Boulder 1	48.00	\$17.00	\$816.00
BOU2037	Sq. Ft.	Boulder 2	144.00	\$17.00	\$2,448.00
BOU2081	Sq. Ft.	Boulder, Moss Rock	180.00	\$17.00	\$3,060.00
MSC484	sq ft	Flagstone 1	406.28	\$5.00	\$2,031.40
SHR223-G	5 Gal.	Coontie	10.00	\$55.00	\$550.00
SHR953-G	5 Gal.	Croton	26.00	\$55.00	\$1,430.00
SHR390-C	5 Gal.	Azalea, Poukaninsis	5.00	\$55.00	\$275.00
TRE192-G	2"	Birch, Heritage River	2.00	\$225.00	\$450.00
TRE100-G	2"	Lilac, Dwarf Korean	2.00	\$225.00	\$450.00
TRE287-G	2"	Magnolia, Saucer	3.00	\$225.00	\$675.00

**Export a Quote** – You can now export a quote to a file and effortlessly import it to another computer. Perfect for moving between two different computers, or for the person in the office who sends out quotes or handles the billing tasks.

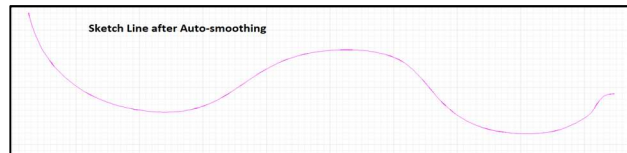
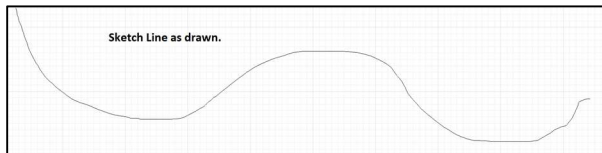
**RealDWG 2018** – RealDWG support has been upgraded to include 2018 DWG and DXF CAD files, including AutoCAD® 2018. Your ability to open and save AutoCAD files just got better.

**New Hybrid Line Type** – You can now create a line, such as edging, with both curved and straight segments. Draw a polyline, and then change any segment to a number of different curve types.

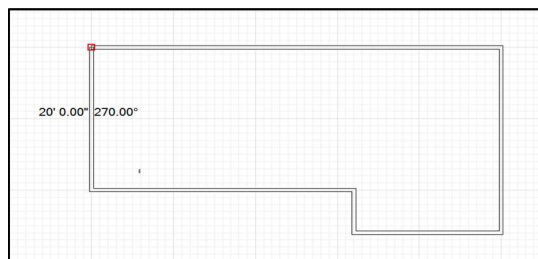
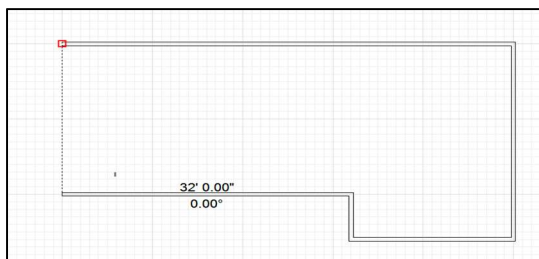


**Enhanced Soldier Course** – Create a paver and now you can add the soldier course after it is drawn on the inside in addition to the outside.

**New Intelligent Sketch command** – Use the stylus on your tablet computer (such as a Surface Pro) to draw a line (edging for example) and it will be automatically smoothed and easily editable.



**Auto-Align Foundation Walls** – We've added a new auto-align feature for drawing foundation walls. Just turn on Endpoint Snap and as you draw back towards the starting point you get a dotted line so you know exactly where to click to properly line up with that starting point.



**2D CAD Line Conversion** – Convert 2D CAD lines to other types such as edging, retaining walls, pavers, irrigation, etc. Perfect for using the 2D CAD tools in Planner, or for changing lines in an imported DWG/DXF file to intelligent lines in PRO Landscape.

